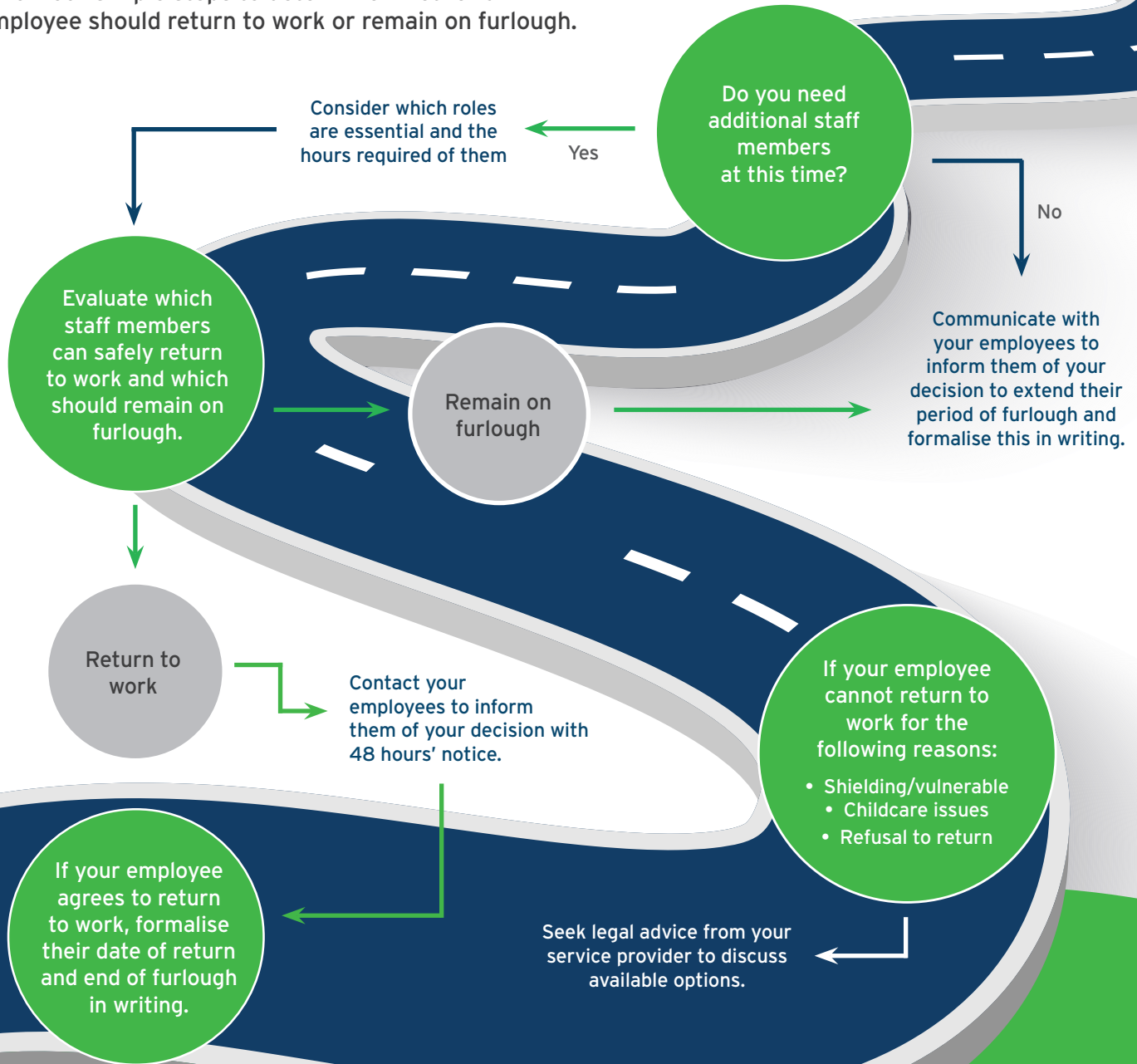


YOUR GUIDE TO Returning staff to work in COVID-19

Follow our simple steps to determine whether an employee should return to work or remain on furlough.



What to consider

Before any member of staff returns to work, ensure you've discussed the following:

- Days and hours of work
- Opening hours and level of service
- Safety precautions in place
- Travel to and from work
- PPE
- Changes to policies and procedures